

Travis County Park Needs

April 7, 2011

County
Travis
STATE OF TEXAS

August 15, 1936

To the Commissioners'
Court of Travis County,
Austin, Texas.

Gentlemen:

As soon as you can have survey and field notes made, I will execute legal deed for approximately five acres of my land fronting on the waters of Marshall Ford Lake, in Travis County, Texas, to be used as a public park only, owned and controlled by Travis County, Texas. The only reservation to be included in said deed will be that on said area no enterprise of profit of any kind whatsoever shall be permitted.

The execution of the above deed shall be in consideration of Travis County, Texas, constructing a road and necessary bridges from the Marshall Ford Dam Road to and across said property to be deeded for public park purposes, said road to be constructed over my land on right of way to be donated to the county, and to be built so as to provide a safe and usable road for the benefit of the general public.

Very truly,

Thos. B. Hughes.

1934

WHEREAS, the Tourism and Recreation Department of the Austin Chamber of Commerce has worked consistently throughout the years for the establishment of adequate and useful recreational facilities in this area; and

WHEREAS, the tourist industry is now one of the largest industries in Texas; and

WHEREAS, the Board of Directors of the Austin Chamber of Commerce, at the beginning of the 1963 calendar year, expressed support for the proposed Travis County Park on LCRA property at Lake Travis; and

WHEREAS, the County Judge and Commissioners of Travis County have now approved the establishment of such a park, and are entering into a cooperative agreement with the Lower Colorado River Authority for the operation of this park;

NOW THEREFORE BE IT RESOLVED that the Board of Directors of the Austin Chamber of Commerce does hereby commend and publicly express their appreciation to the Honorable J. H. Watson, County Judge, Travis County, and County Commissioners Arthur A. Swenson, Robert E. Barker, N. L. Gault, and A. L. Boothe of Travis County for their foresight in making this public park a reality and for their wisdom for providing the recreational needs of the citizens of Travis County;

BE IT FURTHER RESOLVED that this resolution be recorded in the official minutes of this Board and that a copy of this resolution be presented to the County Judge and County Commissioners.

Passed unanimously by the Board of Directors of the Austin Chamber of Commerce August 6, 1963.

Joe K. Wells
Joe K. Wells, President

Vic Mathias
Vic Mathias, Manager

V 7 8969

1963

1970s – 1980s



Webberville Park



Hamilton Pool



Lake Travis Parks

System-wide Planning...

- *Parks 2000* – adopted 1997
- *Parks and Natural Areas Master Plan* – adopted 2006

Parks 2000 Priorities

- **Improve Lake Travis parks**
- **Provide athletic facilities in eastern Travis County**

Lake Travis Park Needs...

- **zone uses**
- **infrastructure improvements**
- **basic amenities**
- **habitat restoration**



Metro Park Needs...

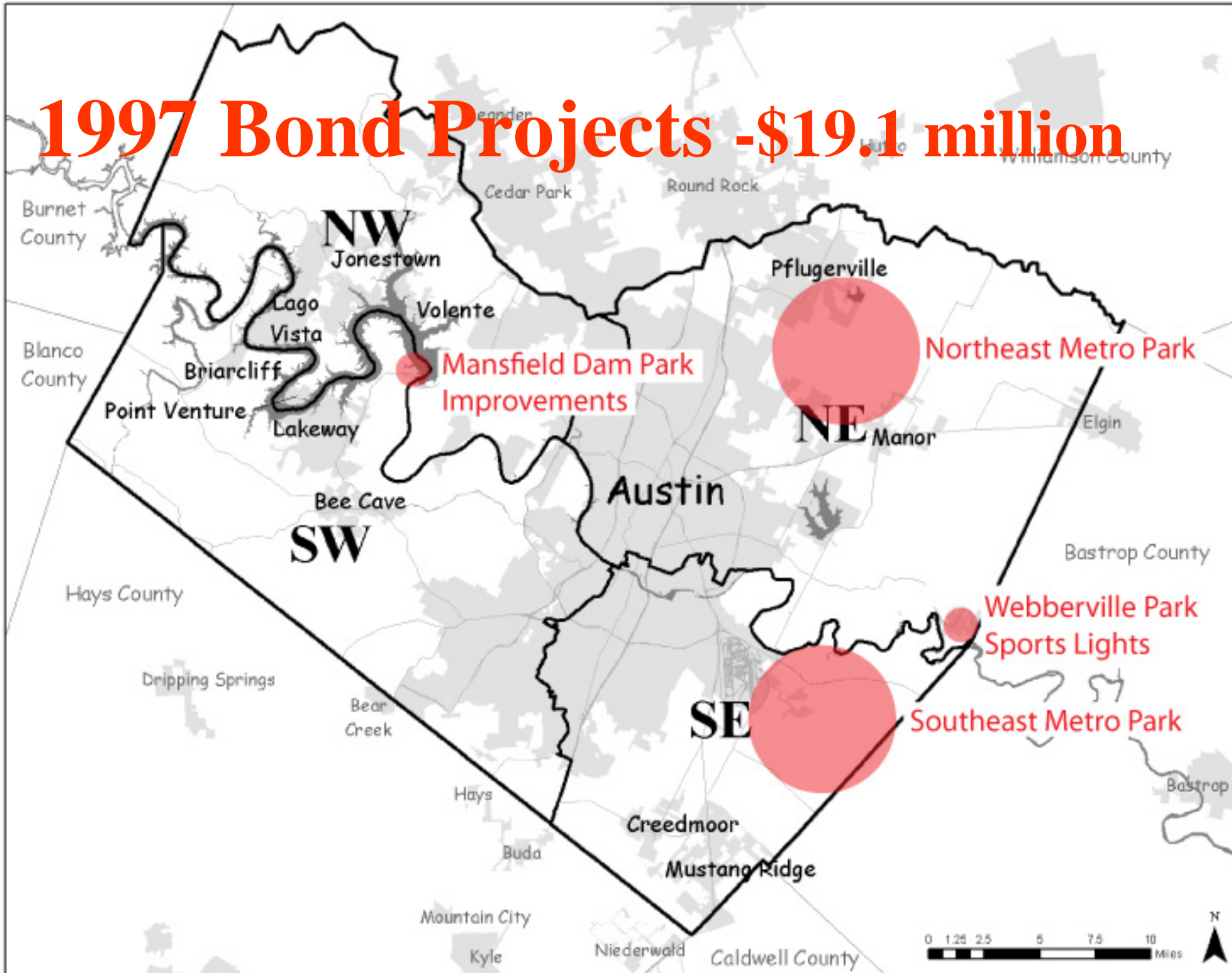
- land

- athletic facilities

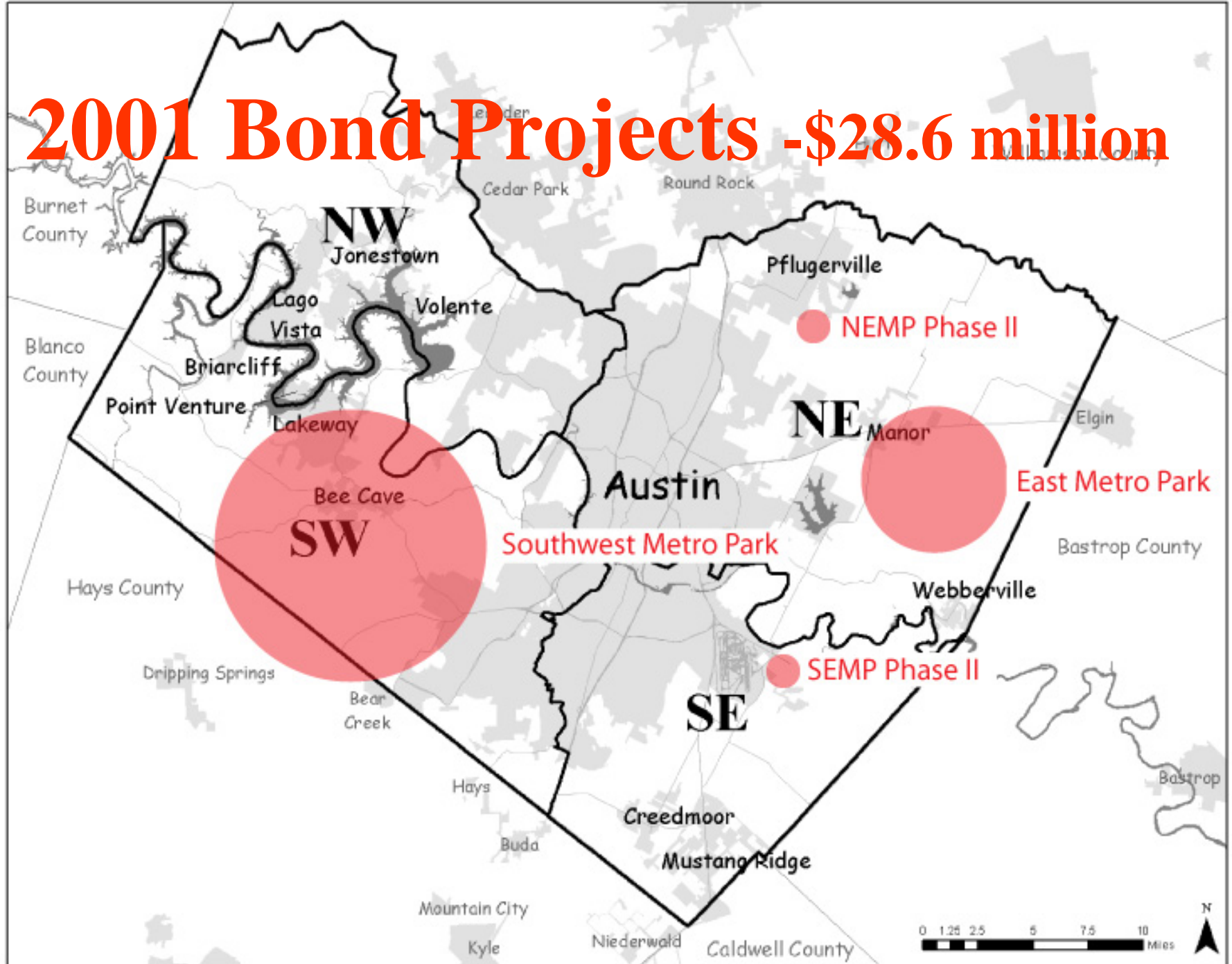
- natural areas



1997 Bond Projects - \$19.1 million



2001 Bond Projects - \$28.6 million



Parks and Natural Areas Master Plan Priorities

- **Provide hiking, biking, and walking trails**
- **Provide natural resource-related opportunities**
- **Protect, restore natural and cultural resources...especially water**

USCOE Recreation Study

Walking (General)	81%
Swimming Outdoor Pool	67%
Swimming Natural Waters	54%
Picnicking	52%
Jogging (General)	49%
Using Playgrounds	48%
Bicycling (General)	44%
Boating (General)	33%
Camping in Tent	30%
Fishing	27%

Participation Constraints

	Percent (Interested in Activity) Citing Reason for Not Participating								
	Time Constraints			Facility Constraints				Equipment Constraints	
	Work Obligations	Family Obligations	School Obligations	No Place to go Nearly	Don't Know Where to Go	Safety or Health Concerns	Fees too Expensive	Equipment Too Expensive	Don't Own Boat or Horse
Outdoor Activity									
Walking (General)									
Swimming In Outdoor Pools	23	10	7	17	3	14	3		
Walking On Roads/Sidewalks	31		5	12		13			
Cultural/Arts Activities	33	22	17	16	12				
Swimming In Natural Waters	22	6	8	22	16				
Picnicking	45	19	16	12	5				
Running, Jogging (General)									
Using Playgrounds	10	13	6	6					
Bicycling (General)	18	8		9	4			10	
Visiting Nature/Outdoor Education Ctrs	27	18	8	14	8				
Walking On Unpaved Trails	22	7	2	26	11				
Run, Jog On Roads/Sidewalks	22	2	2	9		11		2	
Using Water Parks	24	9	3	26	10				
Walking On Paved Trails	21	6	2	23	13				
Residential Wildlife Watching	22	15	13						
Boating (General)									
Camping In Tent	48	13	12	7	10	3		13	
Bicycling On Roads	26	13	10	9	6	9		15	
Fishing	29	13	21	9	3			6	
Run, Jog On Unpaved Trails	17	4	4	31	8				
Run, Jog On Paved Trails	14	7	4	14	17	11			
Basketball	27	18	16	12	4			2	
Miniature Golf	31	18	12	8	8				
Using Community Gardens	35	22	13	11	16				
Golf	28	12	8	4		2	6	10	
Wildlife Viewing Trips	37	19	13	13	16				
Bicycling On Paved Trails	26	6	6	20	16			9	
Soccer	33	21	6	14	8			4	
Tennis	33	28	15	7	7			12	
Volleyball	34	26	14	6	10				

38%

37%

36%

39%

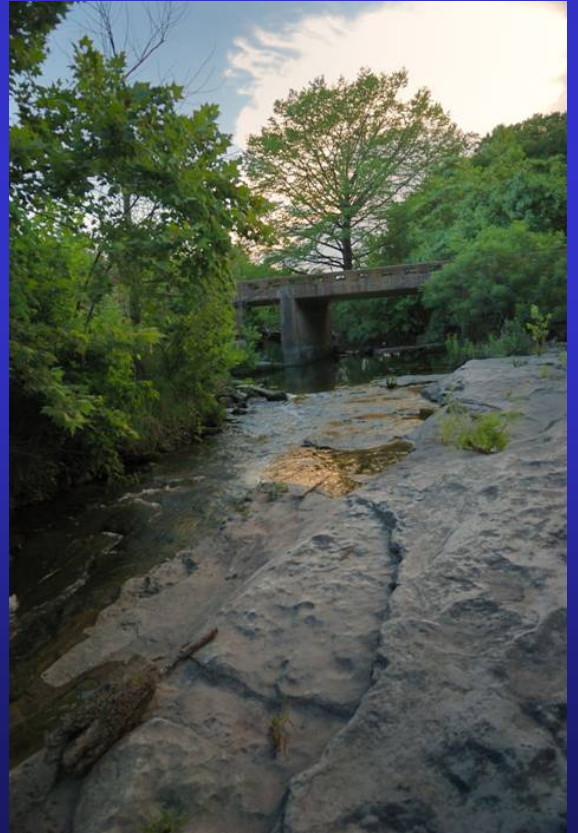
36%

The Language of Conservation

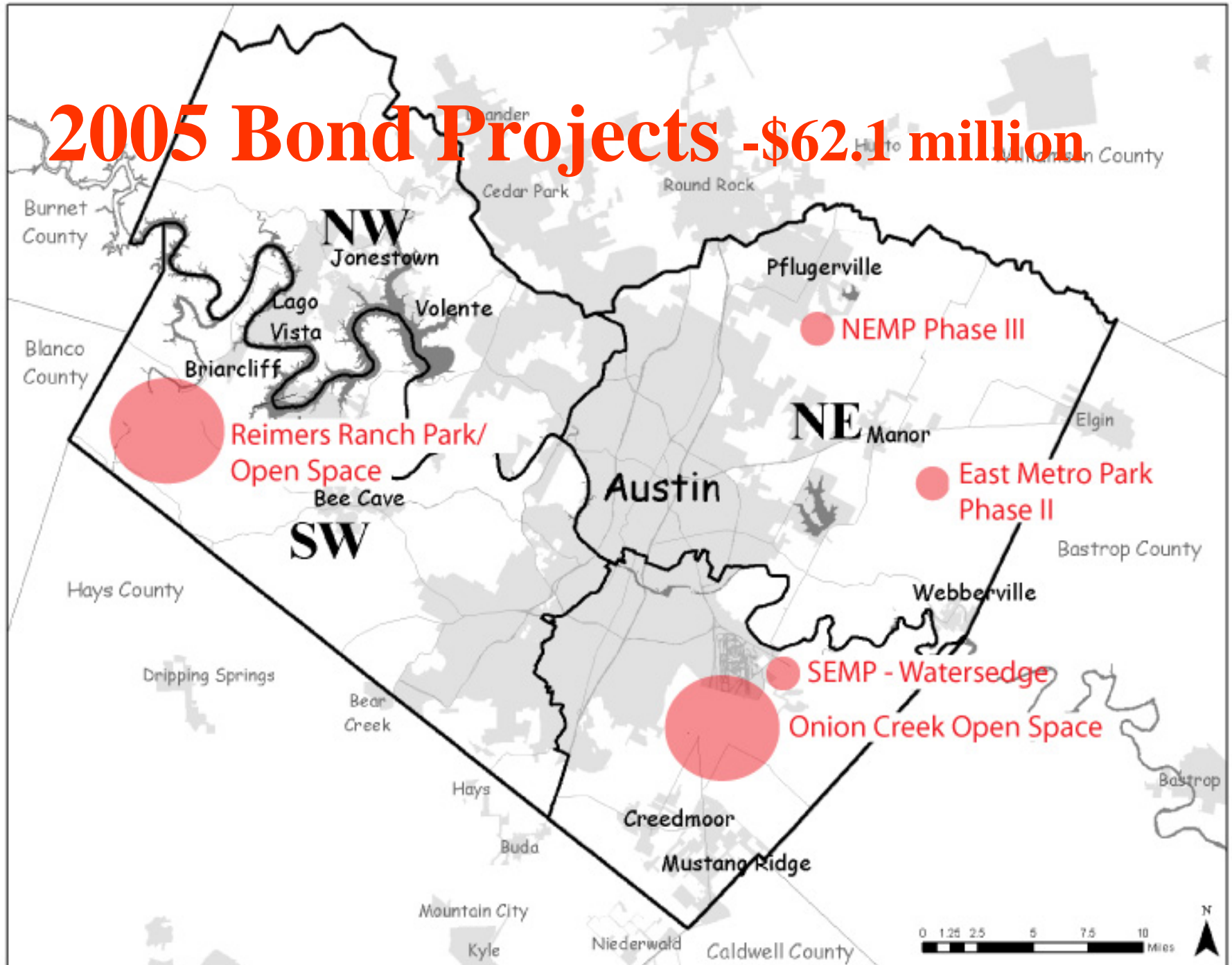
(The Nature Conservancy/Trust for Public Lands, 2004)

- **Water!**
- **Working farms and ranches**
- **Wildlife**





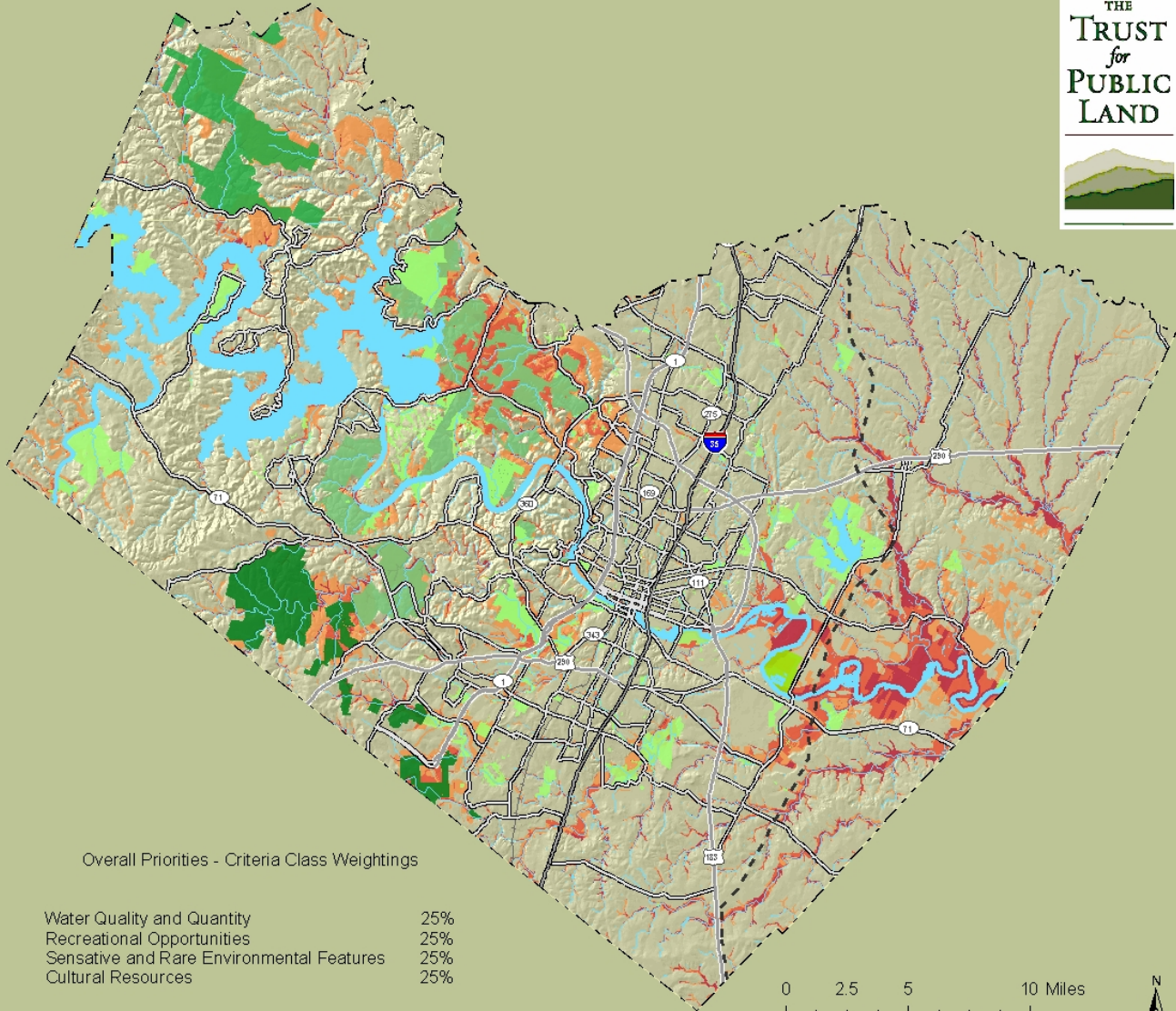
2005 Bond Projects - \$62.1 million



Travis County Greenprint

Travis County, TX Greenprint Overall Conservation Priorities

This map shows the Travis County, TX Greenprint and the overall conservation priorities. Areas in orange have a moderate conservation priority and areas in dark red have a high conservation priority.



Legend

- | | |
|--------------------------------|---------------------------|
| Travis County Boundary | Overall Priorities |
| Parks and Open Space | Moderate |
| Hornsby Bend | High |
| Balcones Canyonlands Preserves | Transportation |
| Refuge Tract Boundaries | Interstate |
| Water Quality Protection Lands | Highway |
| Waterbodies | Major Road |
| | 130 Corridor |

Special thanks to the following data providers:
City of Austin, Travis County, University of Texas
at Austin, Texas Parks and Wildlife, Texas
Historical Commission, CAPCOG, USGS

Map created by Christian Smith for
The Trust for Public Land
on May 17, 2006

Created in ESRI ArcMap 9.1®
Map Projection: NAD 1983 State Plane
Texas Central FIPS 4203

TPL, The Trust for Public Land, and The Trust for Public Land
logo are trademarks of The Trust for Public Land.
Copyright © 2006 The Trust for Public Land.
www.tpl.org

Information on this map is provided for purposes of
discussion and visualization only.

Overall Priorities - Criteria Class Weightings

Water Quality and Quantity	25%
Recreational Opportunities	25%
Sensitive and Rare Environmental Features	25%
Cultural Resources	25%

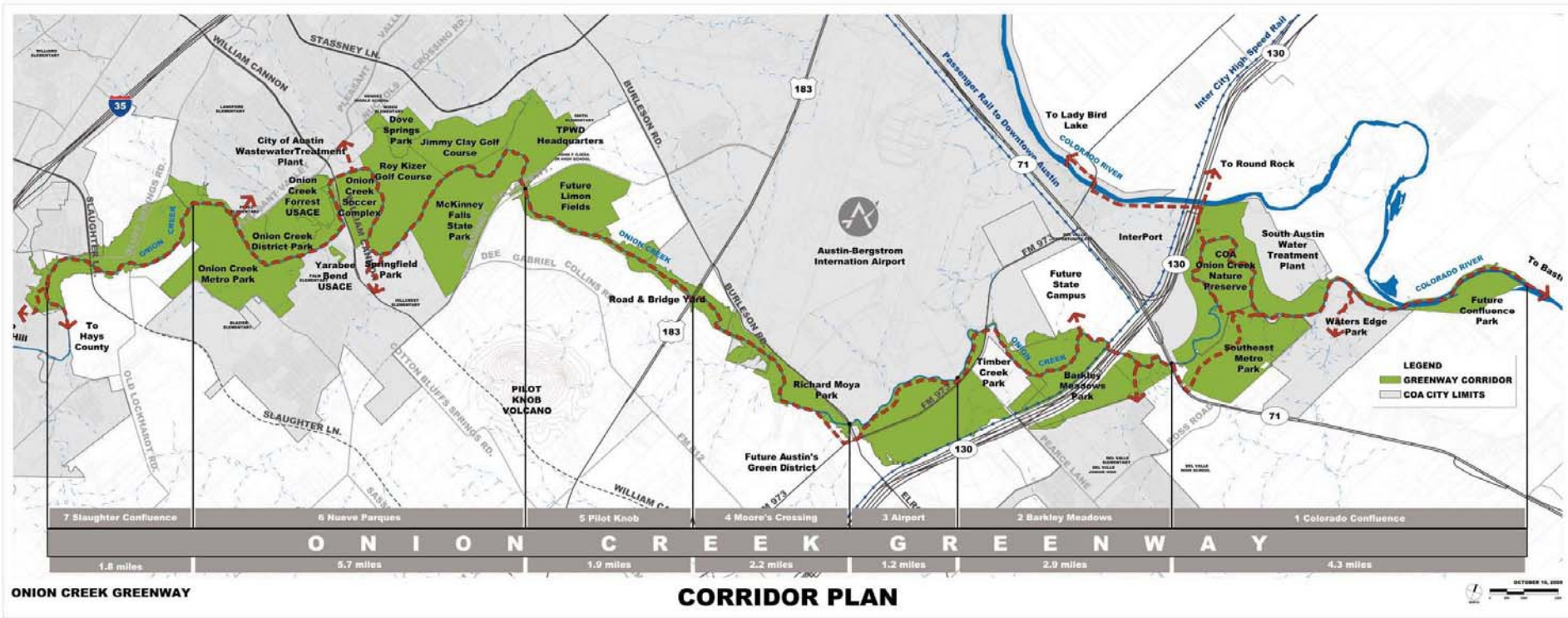


Concept Plan for the Onion Creek Greenway

March 2010

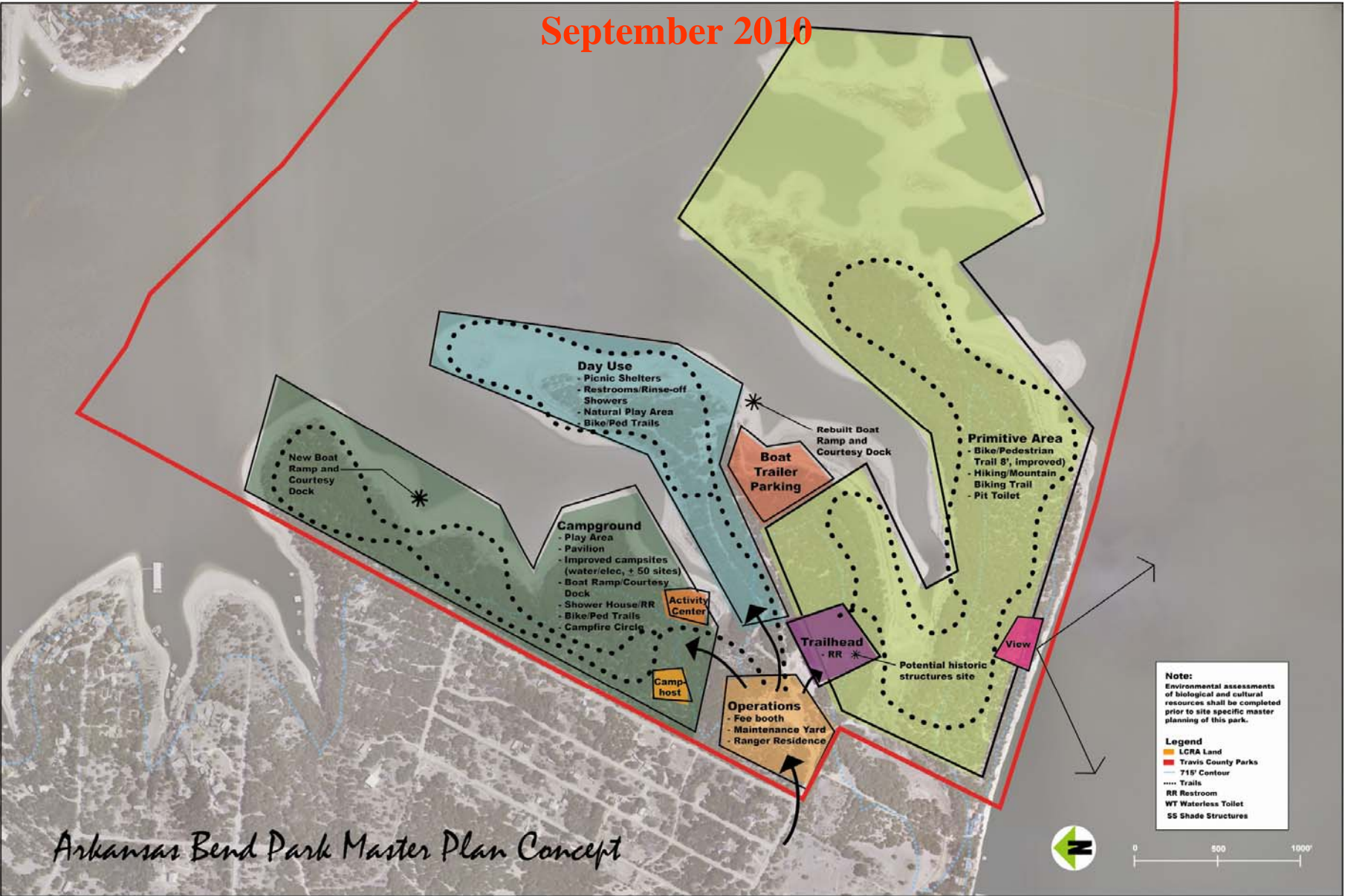
PRELIMINARY DRAFT

TRAVIS COUNTY NATURAL RESOURCES | ONION CREEK GREENWAY



Lake Travis Parks Master Plan

September 2010



Note:
Environmental assessments of biological and cultural resources shall be completed prior to site specific master planning of this park.

Legend
 LCRA Land
 Travis County Parks
 715' Contour
 Trails
 RR Restroom
 WT Waterless Toilet
 SS Shade Structures

Arkansas Bend Park Master Plan Concept



2011 Bond Objectives

- **Develop greenways, river corridors**
- **Improve Lake Travis access, park facilities**
- **Complete existing Metro Parks**
- **Reinvest in park infrastructure**



Land Conservation?

Questions?

Wendy Scaperotta, MLA, AICP
Senior Planner, TNR
(512) 854-7655
wendy.scaperotta@co.travis.tx.us